

- 1. Cross Beam
- 2. Girder
- 3. Inter clamp
- 4. End clamp
- 5. Support
- 6. Diagonal support
- 7. Rear diagonal support

### Structure



- 1. Girder
- 2. Front & rear post
- 3. Girder joint
- 4. Diagonal support

### Features

- **Economical & practical, Quick modular fixation**  
Carbon steel material is economical and durable. Beam and girder design with adjustable hole, no additional cutting and drilling result in efficient installation and significantly reduce the construction cost.
- **Longer service life, Efficient power generation**  
High quality surface treatment, strong corrosion resistance, apply to long service life. Perfectly adapt to all various of mountain, hilly terrain, with high utilization rate and excellent overall generation efficiency.
- **Outstanding diversity & inclusion**  
Multiple foundation options for different terrain which can support with various standard types of PV modules on the market.

### Overview

Monolith GC-II Carbon Steel Double-Post PV Mounting System is suitable for Solar PV system for roof or large ground projects. Providing customized solution according to specific project design. The main structure is made of economical carbon steel material, with simple manufacturing process, efficiency production and output capacity. Independent structural design to minimize the installation time, and construction cost.



### System Parameters

Installation Site	Roof	Design Standard	AS/NZS 1170、ASCE7-10
Tilt Angle	0-60°		JIS C 8955: 2017 International Building code:IBC 2009
Wind Load	60m/s	Material	Q235B、Q345B(Hot-dip Galvanized)
Snow Load	1.6KN/m <sup>2</sup>	Fastener	SUS304 & Zinc-Nickel Alloy & Hot-dip Galvanized
Applicable Solar Module	Framed or Frameless	Color	Silver or Customized
Panel Layout	Portrait or Landscape	Warranty	10 Years

- ⊙ Customized order
- ⊙ Technical support and installation guidance
- ⊙ 10 years warranty
- ⊙ Overseas storage
- ⊙ Perfect after-sales service

### System Component List



**End clamp kit**  
End clamp  
Rhombus nut  
Washer  
Hexagon socket screw



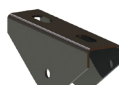
**Inter clamp kit**  
Inter clamp  
Rhombus nut  
Washer  
Hexagon socket screw



**Cross beam/Girder**  
Q235B  
(Hot-dip galvanized)



**Cross beam splice**  
Q235B  
(Hot-dip galvanized)



**Girder joint**  
Q235B  
(Hot-dip galvanized)



**Support**  
Q235B  
(Hot-dip galvanized)



**Rear diagonal support**  
Q235B  
(Hot-dip galvanized)



**Diagonal support**  
Q235B  
(Hot-dip galvanized)

